

ELCA Churchwide and Synodical Update



Prayer

- O God, you have called your servants to ventures of which we cannot see the ending, by paths as yet untrodden, through perils unknown. Give us faith to go out with good courage, not knowing where we go, but only that your hand is leading us and your love supporting us; through Jesus Christ our Lord. Amen.



What biblical narratives are giving you hope these days?

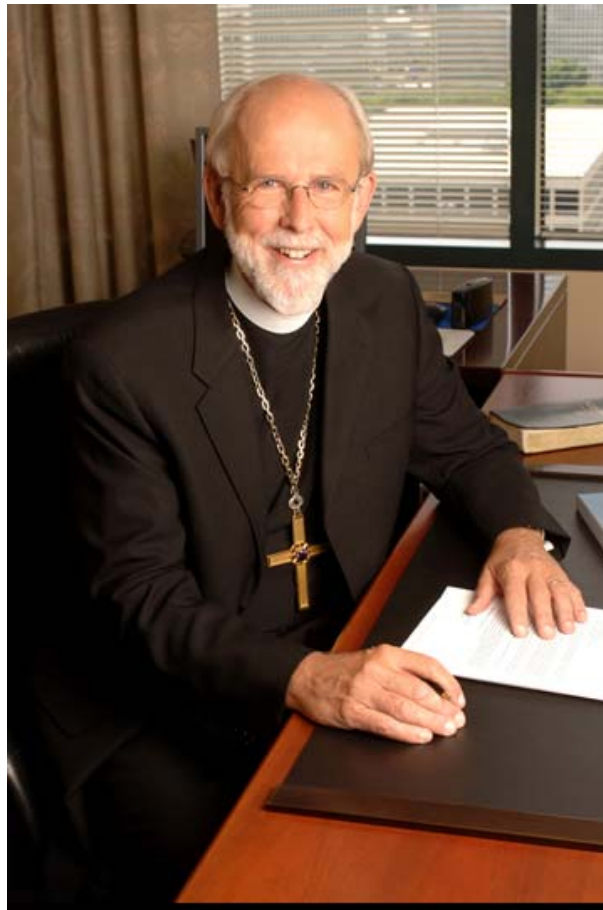
- ¹⁰When the builders laid the foundation of the temple of the Lord, the priests in their vestments were stationed to praise the Lord with trumpets, and the Levites, the sons of Asaph, with cymbals, according to the directions of King David of Israel; ¹¹and they sang responsively, praising and giving thanks to the Lord, “For he is good, for his steadfast love endures forever toward Israel.” And all the people responded with a great shout when they praised the Lord, because the foundation of the house of the Lord was laid. ¹²But many of the priests and Levites and heads of families, old people who had seen the first house on its foundations, wept with a loud voice when they saw this house, though many shouted aloud for joy, ¹³so that the people could not distinguish the sound of the joyful shout from the sound of the people’s weeping, for the people shouted so loudly that the sound was heard far away. Ezra 3

The ELCA announced its redesign today

- What difference will this make for your congregation?
 - Excited about focus coming to our life together nationally
 - Believe more effective in mission
 - Sad because of capacity for mission lost
 - Elca.org – bishop's statements



Bishop Mark Hanson



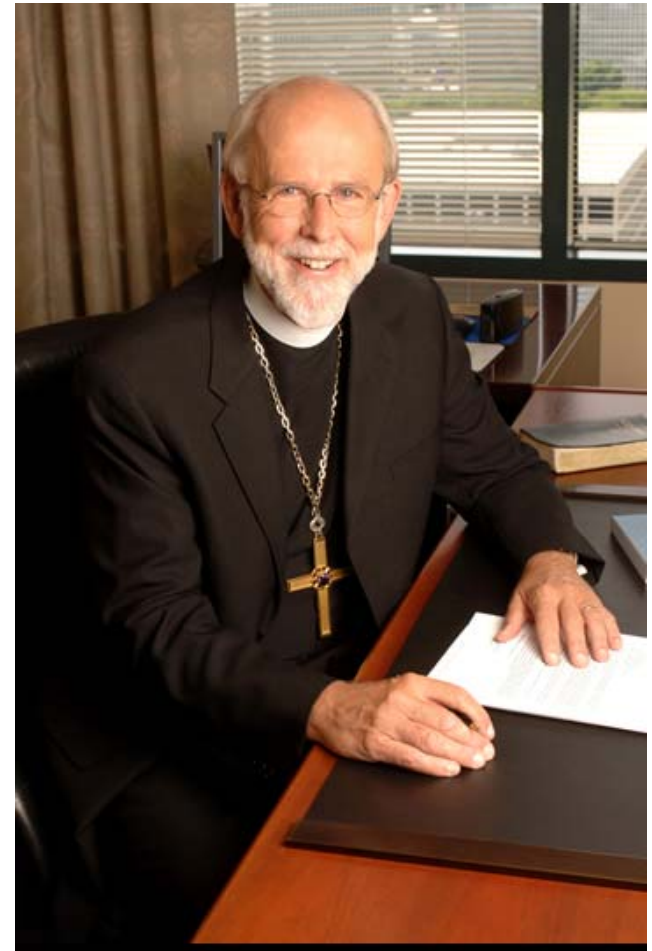
Bishop Mark Hanson

- "For God did not give us a spirit of timidity but a spirit of power, of love and of self-discipline." 2 Timothy 1:7
- "In the name of Jesus Christ our days of timidity are over,"



Bishop Mark Hanson

- "I think we are in a time of 'turning and being turned' as this church.
- The next 11 months ... could be the most significant in the 22-year history of the ELCA.
- These months could be, and I'm confident they will be,"



Pr. Pablo Obregon - ELCA Church Council Member from SW MN Synod

- I see this moment as an opportunity to
- refocus,
- recreate,
- reform,
- re-imagine
- God's calling to the ELCA in the mission of the church.



Reformation

- Semper Reformada – always reforming the structures of the church to serve the changeless Gospel in our changing world.
- Committee for New Lutheran Church – 1980's
 - 25 plus years ago
 - No internet
 - Some right, some wrong, much has changed



Reformation

- Streamline
- Smart
- Never waste a crisis –makes clear our priorities in organizational structure
- How have you been reforming your life in your local congregation lately to serve your mission field?



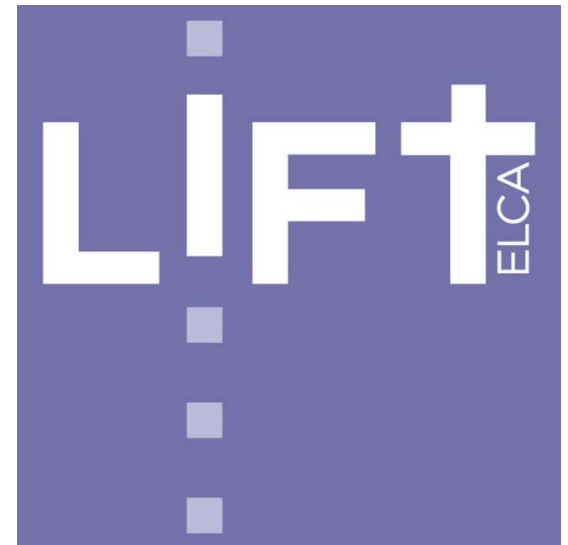
These changes started years ago - Directors for Evangelical Mission

- 3 year old decision
- Teach stewardship, evangelizing
- Focus on congregational vitality
- Decentralize
- Local face on ELCA
- Great response
- Pr. Larry Streng – available
 - In transition helping with mission opportunities



LIFT Task Force -Pr. Dee Pederson

- **What is God calling this church to be and to do in the future?**
- **What changes are in order to accomplish these tasks more faithfully?**
- <http://liftelca.org/>



Two Waves - Great Recession and Church Conflict

- Both have had a budget impact
- ELCA Churchwide
- Synod
- Congregations have been making decisions for the ELCA for a long time
 - Your decisions will shape our shared capacity to serve the Gospel in the years to come.
 - Focus on the main things – Infrastructure



Depth of Change

- Inflation adjustment
 - Half the dollars of 1988 in mission support
 - Synod and churchwide
- Our congregations give more money to other benevolence than they do to support the ecology of our church body
- Shifted from focus on giving together to designated giving
- Impacting your national and synodical church



Depth of Change

- \$65 million two years ago to \$48 million to \$45 million
 - 60-70 people lost position in 2009, similar in 2010
- Loss of worship percentage and numbers across denominations
- How is it in your congregation?

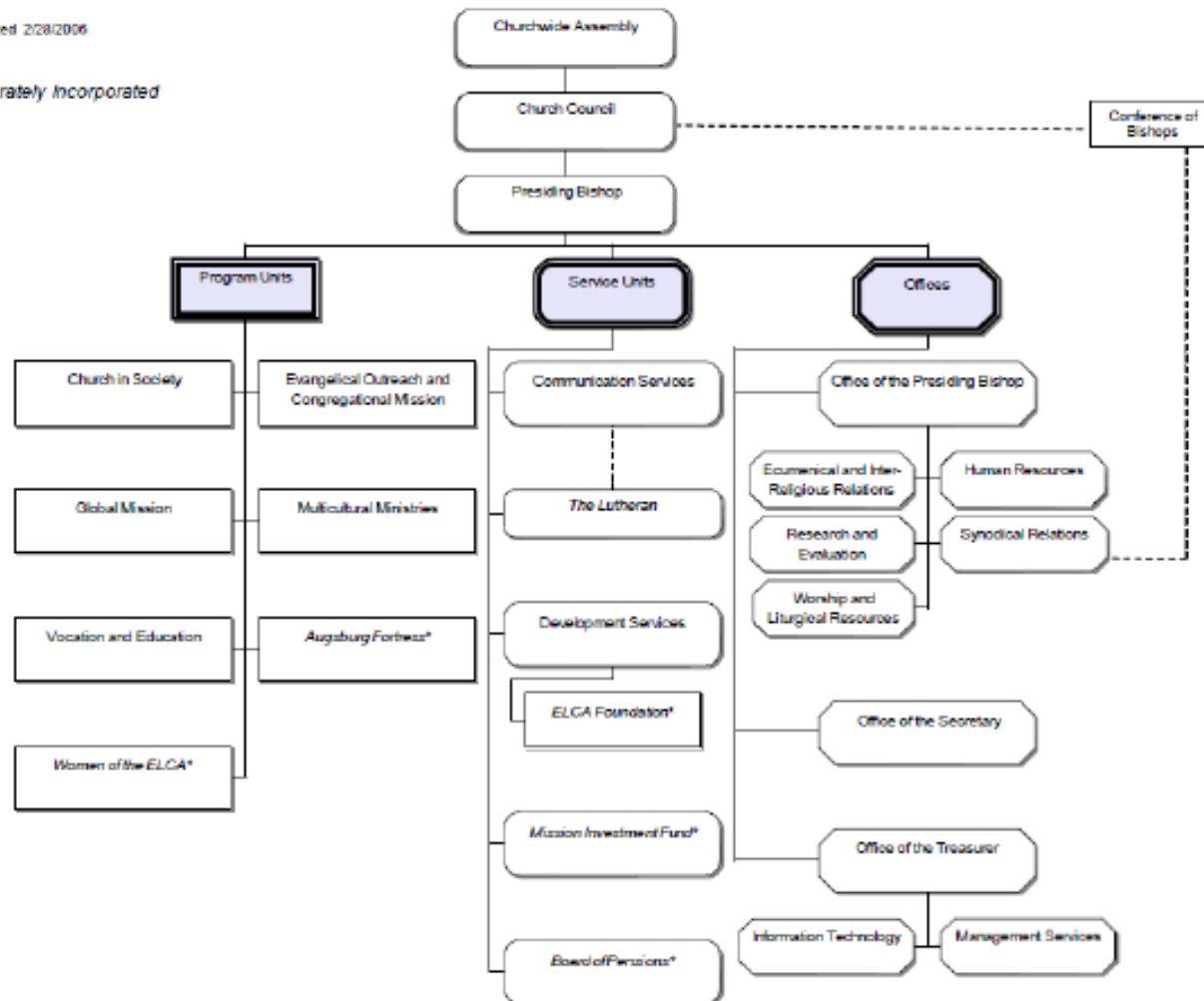


Previous ELCA Churchwide Organization

Churchwide Units

Last Modified 2/28/2006

* Separately Incorporated



New ELCA Churchwide Organization



“What does a faithful, 21st century church look like from a Lutheran point of view?” - Bp. Wayne Miller

- Who are we? (Identity)
- Why are we here? (Mission)
- What is needed?
- What is helpful or advantageous?
- What gets in the way or hinders?

Our Synod - Boldly Walking Together in Christ's Mission

- Engaging **Leaders**
- Equipping **Congregations**
- Serving in **God's World** – Changing Lives



Our Synod - Boldly Walking Together in Christ's Mission

- Engaging **Leaders**
 - **Seminarians – TEEM, DL and Traditional**
 - **Young pastors – First Call**
 - **Pastors and staff – Pastors to Pastor**
 - **Call Process -**
 - **Lay Leaders**
- Equipping **Congregations**
 - Serving in **God's World** –
 - Changing Lives

Our Synod - Boldly Walking Together in Christ's Mission

- Engaging **Leaders**
 - Equipping **Congregations**
 - **Youth Ministry**
 - **Reconciliation**
 - **Leadership Training – Feb. 26**
 - **Rural Ministry**
 - **Large Membership Cong**
 - Serving in **God's World** –
 - Changing Lives

Our Synod - Boldly Walking Together in Christ's Mission

- Engaging **Leaders**

- Equipping **Congregations**

- Serving in **God's World** –

- Changing Lives

- Global Companions – South Africa

- Seminaries and Colleges

- Camps and Elderly Care

- Helping leaders to see mission field God has placed us
in

Pr. Jeff Engholm - leaving team for a new call - Thanks



Interim Synod Staff – Conference Assignments

- Joyce Piper
- Minnesota Valley
- Scenic Valley
- Prairie
- Shetek
- Lac Qui Parle



- Linda Pedersen
- Crow River
- Great River
- Glacial Ridge
- Lakeland
- Watonwan River



Budget Planning -

- We give through the church not to the church
- Communal Support - Ask you to consider raising your congregation's percentage of mission support from your benevolence dollars
- Catch up Sunday



Friends of Southwestern Minnesota Synod Annual Fund

- Personal Support Used in this year
for Mission Support
 - Shared with ELCA and Synod
 - To bridge our communal life
through the transitions



Campus Ministry

- How do we fund our three sites
- Invite you to consider budgeting for Campus Ministry –
 - Give to local site
 - Marshall, Morris, St. Cloud
 - Give to synod with designation – divided between all three.
 - Local mission



Congregations

- If you could reshape your life to better serve Christ Jesus our Lord and to serve your local mission field....
 - What is the greatest possibility that you think would make a difference in your congregation's mission?
 - Please discuss at an upcoming council meeting
 - How will get there?



Synod Email Update

- Tammy.sather@swmnelca.org
- All paid staff
- Formal leaders
 - Council
 - Committee Chairs
- Informal leaders
- This is our way of communicating with congregational leaders.



Redesign and Bp. Hanson - news releases

- www.elca.org – home page
- <http://www.elca.org/Who-We-Are/Our-Three-Expressions/Churchwide-Organization/Communication-Services/News/Releases.aspx?a=4654>
-
- <http://www.elca.org/Who-We-Are/Our-Three-Expressions/Churchwide-Organization/Communication-Services/News/Releases.aspx#&&a=4648>

Prayer

- O God, you have called your servants to ventures of which we cannot see the ending, by paths as yet untrodden, through perils unknown. Give us faith to go out with good courage, not knowing where we go, but only that your hand is leading us and your love supporting us; through Jesus Christ our Lord. Amen.



Churchwide Decisions on Redesign - Two Priorities

- Accompanying congregations as growing centers for evangelical witness
- Building capacity for evangelical witness and service in the world to alleviate poverty and to work for justice and peace.
- What are your priorities?

